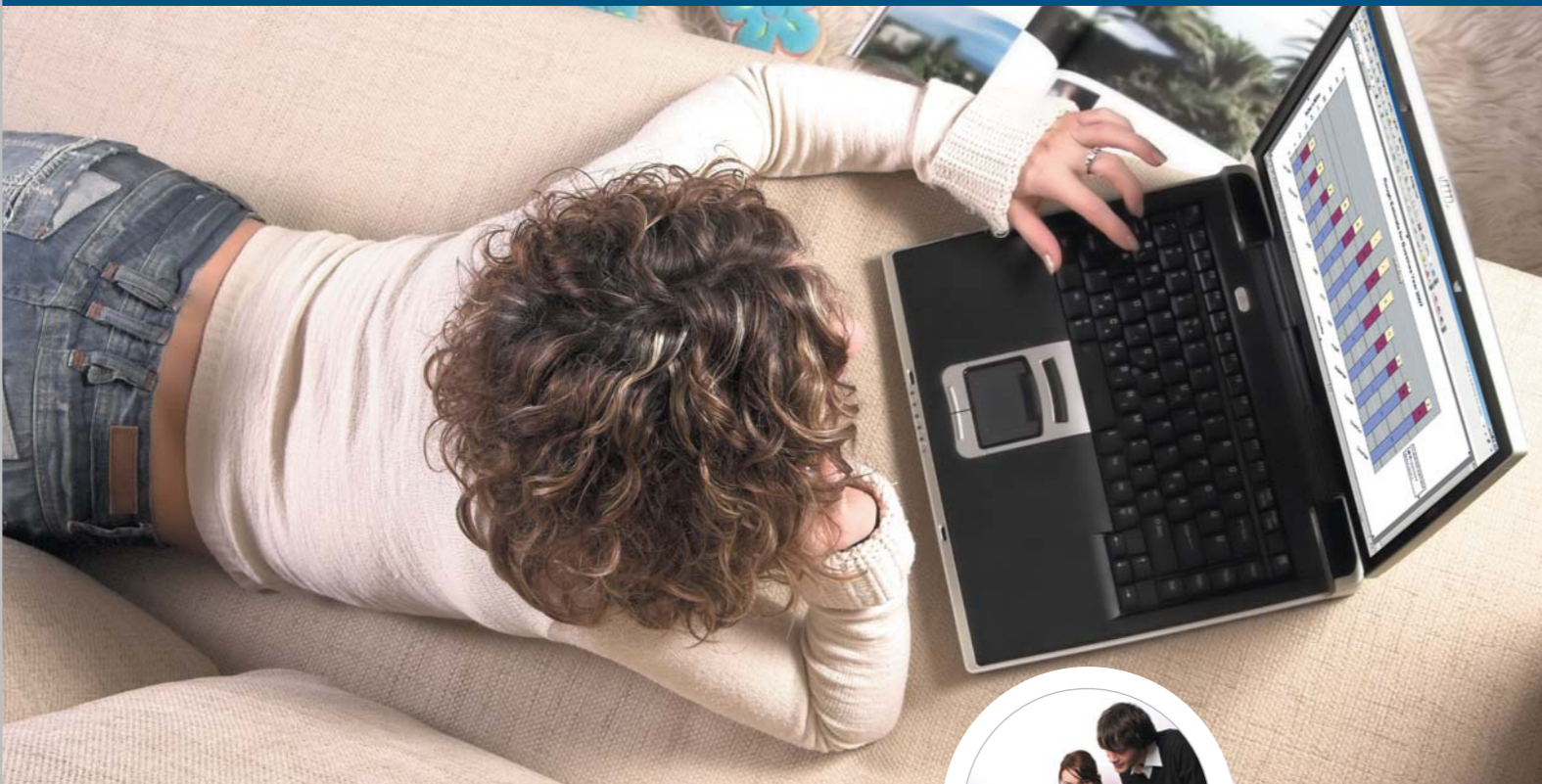


## Powerline WLAN ADSL2+ Router

TW263HR4-X1



TW263HR4-X1

### ADSL COMPLIANCE

- Full-rate ANSI T1.413 Issue 2
- ITU G.992.1 (G.dmt) Annex A or B
- Splitterless ITU G.992.2 (G.lite) specification
- ITU G.994.1 (G.hs)
- ITU G.992.3 (G.dmt.bis / ADSL2)
- ITU G.992.5 (ADSL2plus)
- Supports splitterless ADSL implementation
- Supports Dying Gasp

### ATM SUBSYSTEM

- PPP over ATM (RFC 2364)
- Bridged IP over ATM (RFC 1483)
- PPP over Ethernet (RFC 2516)
- Multiprotocol Encapsulation over AAL5 (RFC 2684)
- Supports up to 8 Virtual Channel Connections (VCCs)
- Supports UBR, CBR, and VBR service classes
- ATM Forum UNI 3.1 / 4.0 PVC
- Support OAM F4 / F5 look-back, AIS and RDI OAM cells

### FEATURES

- IP Alias
- User Datagram Protocol (UDP)
- Transmission Control Protocol (TCP)
- Internet Control Message Protocol (ICMP)
- Internet Group Management Protocol (IGMP)
- PPP over PAP (RFC1334)
- PPP over CHAP (RFC1994)
- MIB II support (RFC1213)
- Transparent bridging as specified in IEEE 802.1D
- NAT (Network Address Translation)
- Dynamic Host Configuration Protocol (DHCP)
- Dynamic DNS support
- Routing Information Protocol (RIP) v1 and v2

### WIRELESS 802.11b/g

- Compliant 802.11g and 802.11b
- 2.4 GHz – 2.48 GHz frequency range
- Supports 64/128 bits WEP and WPA
- 54 Mbps wireless operation rate
- Supports Quality of Service (QoS) – 802.11e

### MANAGEMENT

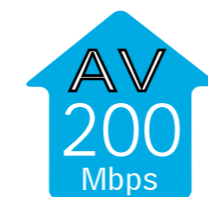
- TFTP client and server
- DHCP client and server
- FTP server and client
- Universal Plug and Play (UPnP) support
- Web-based Graphical User Interface (GUI) enabling end-user device configuration via HTTP
- Update of boot image or configuration data via TFTP / FTP
- Syslog
- Built-in Diagnostic Tools
- SNMP MIB support

### ETHERNET INTERFACE

- IEEE 802.3
- 10 / 100 Mbps
- Ethernet interface supporting up to 64 LAN hosts

### POWERLINE INTERFACE

- 128-bits DES encryption
- Data rate: up to 200Mbps
- Compliant with HomePlug® AV specification
- Frequency band: 4.3 MHz – 20.9 MHz



TW263HR4-X1



The Powerline WLAN ADSL2+ Router compliance to supported ADSL standards : ANSI T1.413 Issue 2, ITU-T G.992.1 (G.dmt), ITU-T G.992.2 (G.lite), ITU-T G.992.3 (G.dmt.bis/ADSL2), and ITU-T G.992.5 (ADSL2+) specification. Both Annex A (ADSL over POTS) and Annex B (ADSL over ISDN) are supported.

This products use existing AC electrical wiring as a physical medium for broadband networking based on the HomePlug AV standard. The HomePlug AV standard supports data rates up to 200 Mbps.

The TW263HR4 also combines 802.11b/g Wireless Access Point , it offers quick access to the wireless network.

