

56k Modem

EXTERNAL

Quick Installation Guide



56K External Modem

Dear Customer

Thanks for choosing this 56K External modem. Please carefully follow the instructions for its use and maintenance and, once this item has run its life span, we kindly ask you to: dispose of it in an environmentally friendly way, by putting it in the separate bins for electrical/electronic waste, or to bring it back to your retailer who will collect it for free.



Index Guide

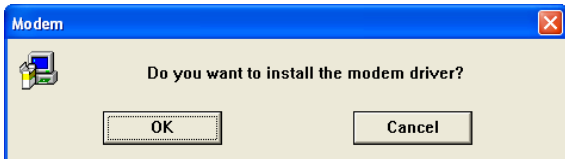
Features-----	2
System Requirements-----	3
Modem Installation-----	3
LED Indicators -----	4
Installation Guide for Windows Series 95 / 98 / 98SE / ME / 2000 / Vista and XP-----	4
Installation Guide for Windows NT4.0 -----	6
Installation Guide in Linux Red Hat-----	6

LED Indicators

LED	Color	Meaning
POWER	Green	ON: Power on
DTR	Green	ON:Data terminal ready
TD	Green	Flash: Transferring data from the modem
RD	Green	Flash: Receiving data from the modem
OH	Green	ON: Modem off hook OFF: Modem on hook

Installation Guide for Windows Series 95 / 98 / 98SE / ME / 2000 / XP and Vista

1. As Windows 95 / 98 / 98SE / ME / 2000 / XP/ Vista starts it will detect that new hardware has been added, and start the “**Add New Hardware Wizard**” Click on **Cancel**.
2. Please insert the analog Modem communication CD into your CD-ROM drive.
3. The CD should auto-start, displaying the following window. If it does not start, click on Start – Run and type in CD:\autorun.exe (where CD is the drive letter of your CD-ROM drive).
4. Please select “**Install Modem Driver**”.
5. Please click “**OK**” to install the modem.



Features

Data Mode Capabilities

ITU-T V.90 upstream: 56000 bits/s—28000 bits/s (PCM)
ITU-T V.90 downstream: 33600 bits/s—2400 bits/s (TCM)
ITU-T V.34: 33600 bits/s—2400 bits/s (TCM)
ITU-T V.32 bis: 14400, 12000, 9600, 7200 (TCM), 9600, 4800 (QAM)
ITU-T V.32: 9600 (TCM), 9600, 4800 (QAM)
ITU-T V.22 bis: 2400 bits/s (QAM)
ITU-T V.23: 1200/75 (FSK)
ITU-T V.21: 300 (FSK)
Bell 212A: 1200 (DPSK)
Bell 103: 300 (FSK)

FAX Mode Capabilities

ITU-T V.17: 14400 bits/s, 12000 bits/s, 9600 bits/s, 7200 bits/s (TCM)
ITU-T V.29: 9600 bits/s, 7200 bits/s (QAM)
ITU-T V.27 ter: 4800 bit /s, 2400 bits/s (DPSK)
ITU-T V.21 channel 2: 300 (FSK)

Error Mode and Data Compression

V.42 error correction (LAPM and MNP ®)
V.44 data compression
V.42 bis, and MNP class five data compression

Data, FAX, and Voice Interface

ITU-T V.250 AT Command Set
ITU-T T.31—Class 1 FAX

Note:

PCM: Pulse code modulation
DPSK: Differential phase shift keying
QAM: Quadrature amplitude modulation
TCM: Trellis code modulation
FSK: Frequency shift keying

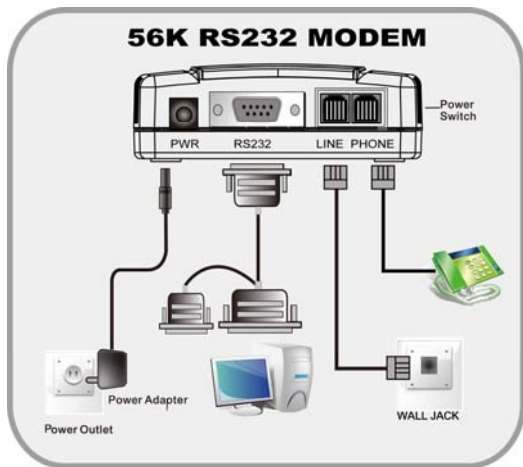
System Requirements

- Windows NT4.0 /95 /98 /98SE /ME /2000 /XP/Vista and Linux RedHat Operating System.
- 20 MB Hard Disk free space or above
- CD-ROM drive.

Modem Installation

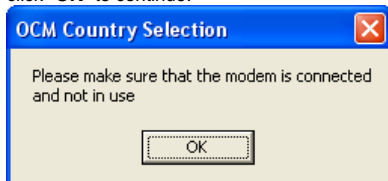
1. Please turn off your computer.
2. Please connect RS232 modem and PC with RS232 cable.
3. Please connect the other end of the phone cord to a telephone phone point, via the supplied adaptor (RJ11) if required.
4. Plug the AC adapter into the modem's AC IN jack, and plug the other end into an electrical outlet.

The diagram below illustrates the typical external modem connection:

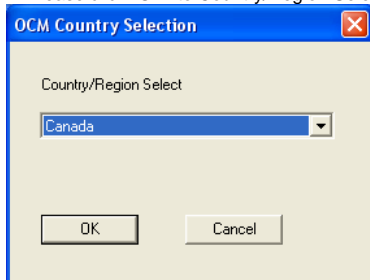


5. Please turn on your computer.

6. Please make sure that the modem is connected and not in use, and then click "OK" to continue.



7. Please click "OK" to Country/Region Select



8. Please click "OK" to install completely.



If you can not perform these procedures smoothly as above, please perform the file directly:

CD:\Autorun.exe

Installation Guide for Windows NT4.0

1. Start Windows NT4.0. Click **Start | Settings | Control Panel | Modems**.
2. In Install New Modem box, with **Don't detect my modem, I will select it from a list** checkbox selected, click **Next**. Insert the Installation CD into your CD-ROM drive.
3. Click **Have disk**.
4. Click **Browse** to locate the path of the driver:
x:\DriverNT40 (where x is your CD-ROM drive) and click **OK**.
5. Select the **Agere OCM Serial Modem** from the list and then click **Next**.
6. Highlight the communication port connected to your modem and then click **Next**.
7. Click **Finish** to complete installation.
8. When **Modem Properties** window appears, click **Close**.

Installation Guide in Linux Red Hat

1. Start Linux RedHat.
2. Click **System Menu | System | Control Panel | Modem Configuration**.
3. At the path **/dev**, enter the single command line:
setserial tty-number uart 16550A irq IRQ-number port I/O-address.
Example: **setserial ttyS2 uart 16550A irq 5 port 0xe400**
4. At the path **/dev**, remove the default modem link, and then link the modem to the tty you assign in last step.
For example: **rm modem**
ln -s ttyS2 modem
5. Select one from ttyS0 to ttyS3 depending on what COM port you plug in.
ttyS0 – COM1 ttyS1 – COM2
ttyS2 – COM3 ttyS3 – COM4

56k Modem

The logo features the text "56k Modem" in a blue, italicized sans-serif font. A horizontal blue line is positioned below the text, with a blue lightning bolt graphic striking the line from the left side.