

ADSL ***USB MODEM***

Quick Installation Guide



ADSL USB Modem

ADSL USB Modem

System Requirement

1. Pentium 200 MHz processor or above
2. Windows 98SE, Windows Me, Windows 2000, Windows XP and Windows Vista.
3. 64 MB of RAM or above
4. 25 MB free disk space

Package Contents

For Annex-A ADSL USB Modem

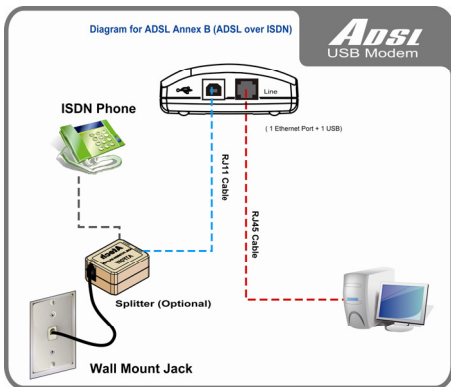
1. ADSL USB Modem
2. CD-ROM (Software & Manual)
3. Quick Installation Guide
4. Telephone Cable (RJ-11)
5. USB Cable
6. Annex A ATF085A1R Splitter (Optional, with an extra RJ-11 Telephone cable)

For Annex-B ADSL USB Modem

1. ADSL USB Modem
2. CD-ROM (Software & Manual)
3. Quick Installation Guide
4. Telephone Cable (RJ-11)
5. USB Cable
6. Annex B ATF057R Splitter (Optional, with an extra RJ-11 Telephone cable)

Connection of ADSL USB Modem

If you have an ISDN telephone line connected the router as shown below:
(Annex-B ADSL USB Modem)

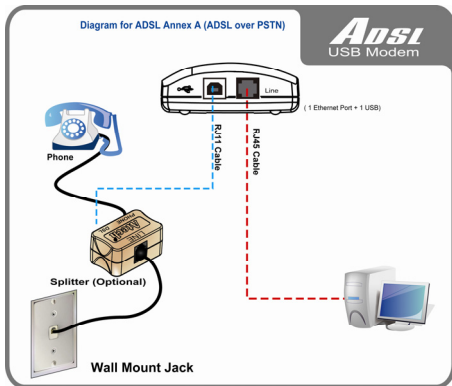


**Use the "ATF057" Annex-B Splitter (Optional)

1. Connect the supplied USB cable from your PC's USB port to the ADSL USB Modem.
2. Connect the supplied RJ11 telephone cable from your home's telephone jack to the "**LINE**" port of the supplied ATF057 splitter. Connect the other supplied RJ11 telephone cable to the "**MODEM**" port of the splitter and connect the other end of this cable to the "**LINE**" port of your ADSL USB Modem.
3. Connect a RJ11 telephone cable to the "**PHONE**" port of the splitter and connect the other end to the telephone input.

ADSL USB Modem

If you have a PSTN telephone line (normal analog line) connected the router as shown below: (Annex-A ADSL USB Modem)



**Use the "ATF085A1R" Annex-A Splitter (Optional)

1. Connect the supplied USB cable from your PC's USB port to ADSL USB Modem.
2. Connect the supplied RJ11 telephone cable from your home's telephone jack to the "**LINE**" port of the supplied ATF085A1R splitter. Connect the other supplied RJ11 telephone cable to the "**MODEM**" port of the splitter and connect the other end of this cable to the "**LINE**" port of your ADSL USB Modem.
3. Connect a RJ11 telephone cable to the "**PHONE**" port of the splitter and connect the other end to your telephone.

LED Meaning

Your ADSL USB Modem has indicator lights on the front side. Please see below for an explanation of the function of each indicator light.

- **PWR** : Power indicator
- **Link** : ADSL Link indicator
- **Data** : Data Transfer indicator

Table 1.1--- LED function

Label	Color	On	Flash	Off
PWR	Green	Power On	NA	Power Off
Link	Green	Connect to DSLAM	Disconnect to DSLAM	NA
Data	Green	NA	Transmit / Receive Data	NA

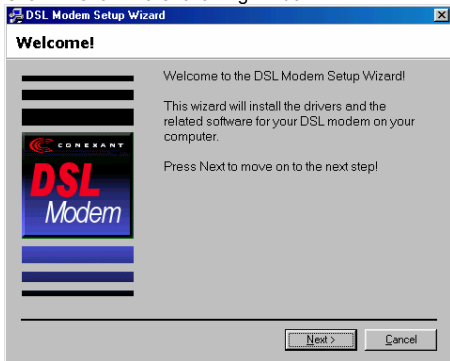
Install the ADSL USB Modem

For Windows XP/Vista

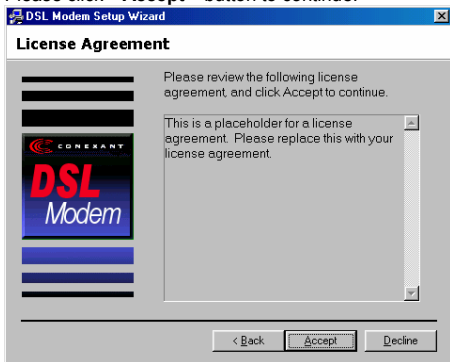
1. Please turn on your computer.
2. Do not connect your ADSL USB MODEM device to the PC prior to driver installation and connect **ONLY WHEN PROMPTED TO DO SO DURING THE SOFTWARE INSTALLATION PROCEDURE.**
3. Please insert the supplied CD into your CD-ROM drive.
4. The CD should auto-start, displaying the window shown in 5. below. If your CD does not start automatically go to Windows Explorer, Select your CD drive and click “**autorun.exe**”
5. Please click “**USB Driver Installation**” to continue.



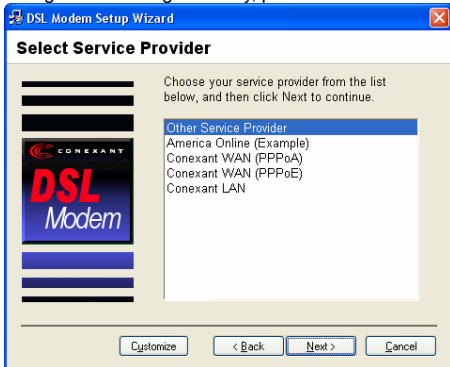
6. Click "Next" in the following window



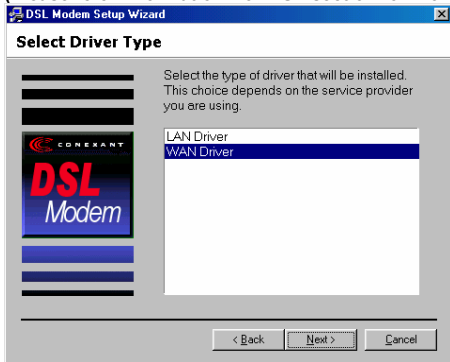
7. Please click "Accept" button to continue.



8. Select your setting in this window and click “ **Next** ”. If you want to configure the setting manually, please click “ **Customize** ”.



9. You can see the parameters that you selected “LAN Driver” or “WAN Driver” in this window, click “Next” to continue.
(Please refer information from ISP section for more details)



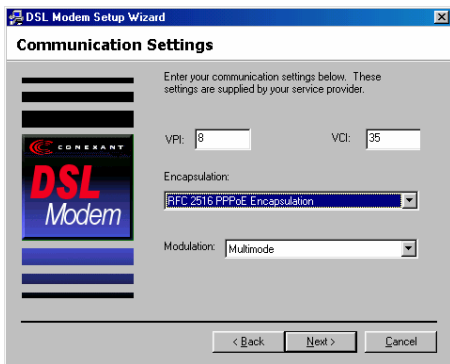
The types of the “LAN Driver” will be listed as below:

- * RFC 1577 Classical IPoATM
- * RFC 2684 IPoATM Bridged LLC Encapsulation
- * RFC 2684 IPoATM Bridged VC Encapsulation
- * RFC 2684 IPoATM Routed LLC Encapsulation
- * RFC 2684 IPoATM Routed VC Encapsulation

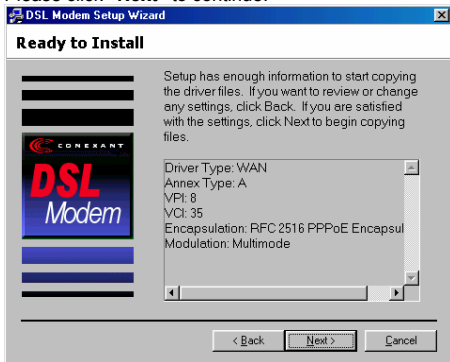
The types of the “WAN Driver” will be listed as below:

- * RFC 2364 PPPoATM LLC Encapsulation
- * RFC 2364 PPPoATM NULL Encapsulation
- * RFC 2516 PPPoE Encapsulation

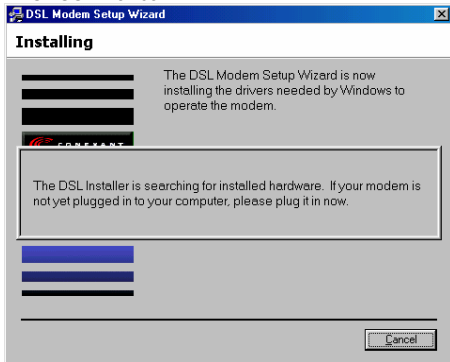
10. Please enter **VPI** and **VCI** and select **"RFC 2516 PPPoE Encapsulation"** and then click **"Next"** to continue.
(Please refer information from ISP section for more details)



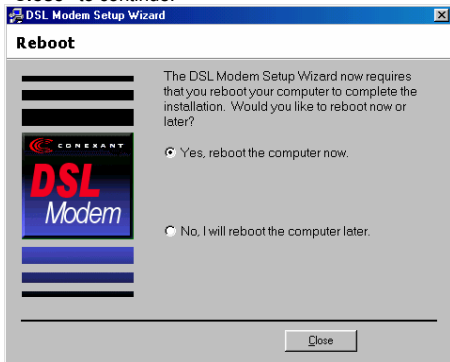
11. Please click **"Next"** to continue.



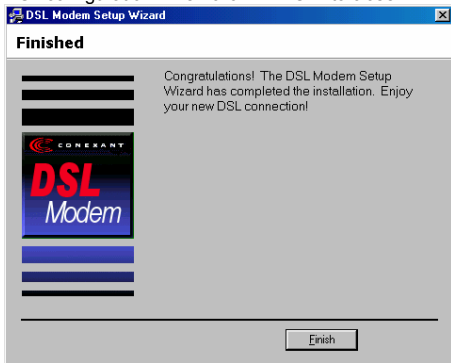
12. Please follow the instruction from pop-up window and plug in your ADSL USB Device.



13. Please select **"Yes, reboot the computer now"** and then click **"Close"** to continue.



14. The Wizard already has completed the DSL Device installation and DSL configuration. Then click **“Finish”** to close.



Access Internet via “Conexant Dial-Up PPP Conexant “ to Dial up

1. Double click the **“Conexant Dial-Up PPP Connection”** icon on desktop



2. Please fill in the **User name** and **Password** that assigned by your Internet service provider, check **“Save this user and password for the following users:”** and then click on **“ Dial ”** to connect to Internet.



You can now access the Internet!!

ADSL
USB MODEM

